

UNITED YACHT SALES

“Classy Lady”



74' Antago – 2000

Builder:	Antago - Viareggio	Range:	350 n.m
Stylist:	Fulvio De Simone	Water Capacity:	450 Gallons
Model:	Motor Yacht	Holding Tank:	82 Gallons
Type:	Flybridge Motor Yacht	Hull/Deck Material:	Solid Fiberglass
Flybridge:	Bimini Top	Hull Configuration:	Deep V
LOA:	73' 10"	Displacement:	58 t (full load)
LWL:	58' 7"	Class:	Cat.A-CE European Certificate
Beam:	19' 3"	Flag:	U.S.
Draft:	6' 2" (max)	Guest Staterooms:	4 (sleeps 8)
Speed:	23 kts (cruise)	Crew Cabins:	1 (sleeps 1 / 2)
Speed:	27 kts (max)	Heads:	7
Fuel Capacity:	1665 Gallons	Location:	Puerto Rico
Engines:	2 x CAT 3412 TAC / 1370 HP @ 2300 RPM		

Reduced to \$1,300,000



Earning your trust, one boat at a time

701 North Federal Highway Suite 301 • Stuart, Florida 34994

772.463.3131 • 772.463.3121

united@unitedyacht.com

ACCOMMODATIONS

Sleep 8 guests in 4 staterooms and 1-2 crews in one cabin forward with access from the fore deck.

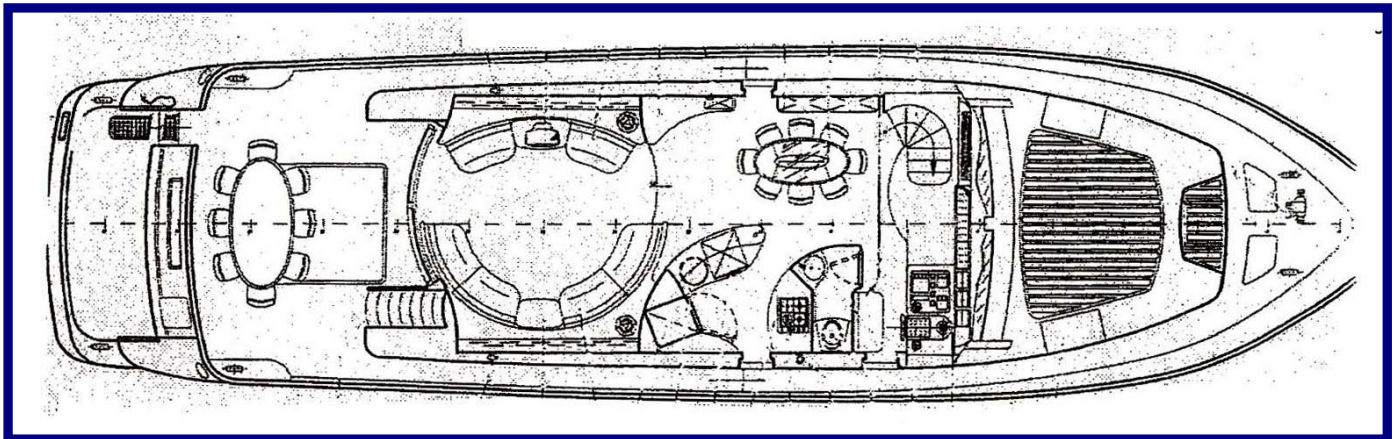
MAIN DECK FROM STERN TO BOW

Teak on all the decks including swim platform and fly bridge. Huge swim platform with handrail and electric swim ladder. On the transom to starboard there is the door to the engine room and to port the stair to the aft deck. The aft deck has a beautiful lacquered wood table with 6 rattan chairs for dining al fresco. A molded stair with teak steps leads to the fly bridge at starboard and a tempered-glass, curved sliding door framed in polished stainless steel leads to the salon.

The salon features two semicircular sofas at the two sides, which are upholstered with silk fabrics. The sofas have seating for 12, despite each sofa is interrupted in the middle by a wood piece of furniture: one contains a recessed TV and the other the entertainment center. The sophisticated elegance of the ambient is accented by 5-trim valences, designer's wood motifs on the ceiling with recessed lights, and two semicircular coffee tables that can double into one and have storage underneath.

Up one step from the salon there is the open galley with onyx counters and onyx floor. The galley is faced by the dining table with 6 chairs and adequate storage cabinets all around, which includes a recessed ice maker. At the same level forward we find the wheelhouse at starboard, with a beautiful day head behind the foldable helm seat, and the stairs leading to the lower deck at port. Rather unusually there are three airplane-type doors to the main deck in this area: one in the galley (stbd), one in the dining area (port), and one in the wheelhouse (stbd).

MAIN DECK



Earning your trust, one boat at a time

701 North Federal Highway Suite 301 • Stuart, Florida 34994

772.463.3131 • 772.463.3121

united@unitedyacht.com

MAIN DECK FEATURES

Salon – Aft View



Salon – Forward View



Wheelhouse



GALLEY AND OTHER DOMESTIC EQUIPMENT

Galley

- Galley up
- Whirlpool 4-burner ceramic range with exhaust hood
- Stainless Steel sink
- Onyx work tops and two Onyx counters at different levels (to be used as bar counters)
- Refrigerator and freezer
- Dishwasher



- Convection/microwave oven
- Fresh water level gauge
- Scotsman ice-maker (recessed in the dining area)
- Whirlpool barbecue
- Sink (on flybridge)
- Refrigerator (on flybridge)
- Washer and dryer (in the crew quarters)

Earning your trust, one boat at a time

701 North Federal Highway Suite 301 • Stuart, Florida 34994

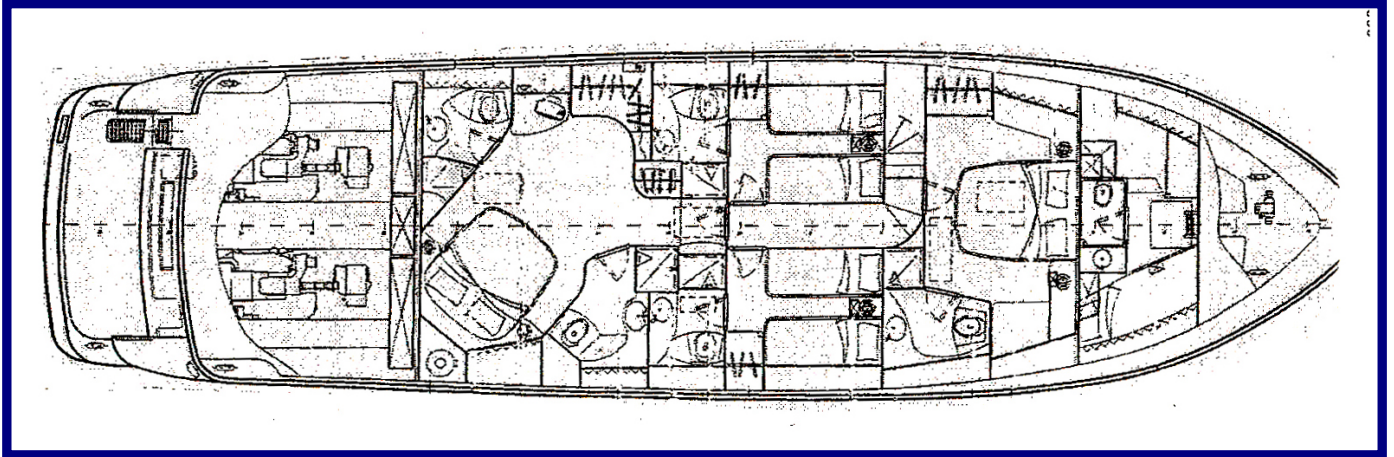
772.463.3131 • 772.463.3121

united@unitedyacht.com

LOWER DECK FEATURES

The layout of the "night area" for owners and guests is the classic one with two full-beam double staterooms (forward and amidships) and two twin staterooms in between, one at each side and separated by the companionway. Unusual features here are the extraordinary space in the master stateroom, where a queen size bed is laid in the starboard/back corner, and the presence of his and hers bathrooms, which does not reduce at all the remarkable number and size of wardrobes, cabinets, and drawers.

LOWER DECK

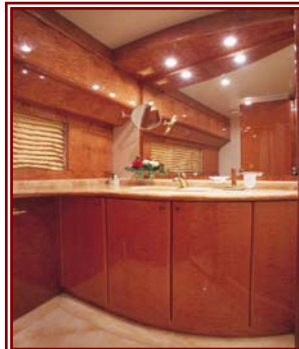


LOWER DECK ACCOMMODATION

Master Stateroom



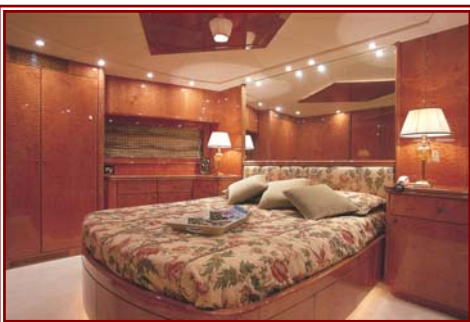
Master Bath



Master Stateroom



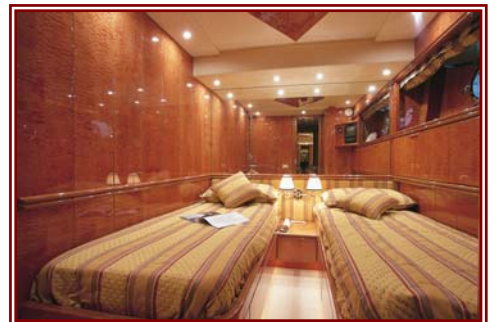
VIP Stateroom



Stairs to Cabins/Port of Bridge



Twin Guest Stateroom



Earning your trust, one boat at a time

701 North Federal Highway Suite 301 • Stuart, Florida 34994

772.463.3131 • 772.463.3121

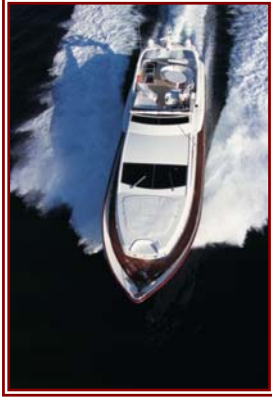
united@unitedyacht.com

FOREDECK – CREW QUARTERS

The boat is a walk-around model so that the crew never walks through the salon during maneuvering or works. The crew cabin on the fore deck is accessed through a hatch that doubles into a nice seat facing forward and this seat is also used as a step to reach the sunbathing area under the windshield of the wheelhouse. The crew cabin had originally two V-berths and a head but one berth has been removed to install a washer and dryer. The berth can be easily reinstalled and the washer and dryer may be eventually placed in the companionway of the cabins. Excellent storage compartments can be found under the sunbathing area in the forward part of the superstructure and they are accessed through big hatches on the two sides.

FOREDECK

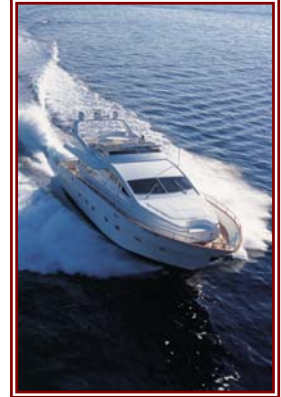
74 Antago Arial View



Seat / Crew Quarter's Hatch - Foredeck



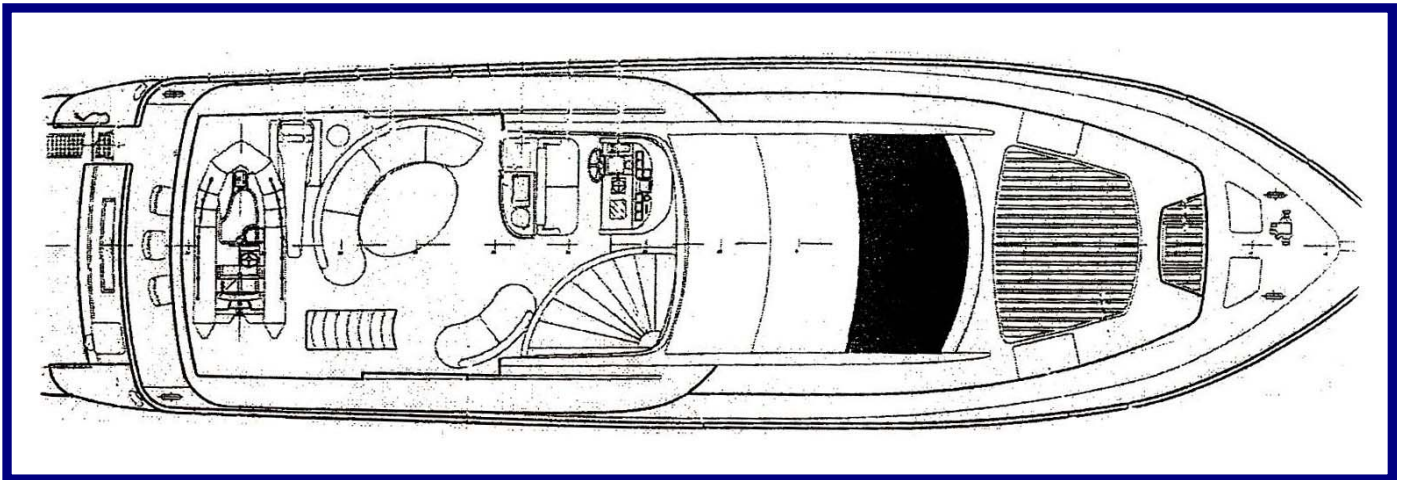
74 Antago Arial View



FLYBRIDGE FEATURES

The molded stair on aft deck at starboard leads to the fly bridge where we find a fiberglass table at port with two counter-facing settees. All the way forward there are the helm seat for two (at port) with wet bar, barbecue and fridge in the back, and a raised sunbathing area (at starboard) with the life belts stored underneath. Tender and crane are in the back of the fly bridge on the “boat area” under the radar arch.

FLYBRIDGE



Earning your trust, one boat at a time

701 North Federal Highway Suite 301 • Stuart, Florida 34994

772.463.3131 • 772.463.3121

united@unitedyacht.com

FLYBRIDGE FEATURES

Flybridge Helm



Helm Seat with Wet Bar and Barbecue



Flybridge - Aft



Flybridge – Arial View



ELECTRONICS AND NAVIGATION EQUIPMENT

- Simrad CE 50 radar (w/h & f/b)
- Simrad/Robertson AP20 autopilot (w/h & f/b)
- Simrad FU35 follow-up (w/h & f/b)
- Northstar 961X GPS (w/h & f/b)
- Simrad DS 40/50 plotter (w/h & f/b)
- Simrad CA40 echosounder
- Datamarine log, echosounder, & wind indicator (w/h & f/b)
- Panasonic camera monitor (w/h & f/b) with camera control panel (w/h)
- GMP (Glendinning) throttle/gear controls (w/h & f/b)
- VHF(w/h & f/b)
- Trim tab indicators (w/h & f/b)
- Rudder angle indicator (w/h & f/b)
- Ritchie magnetic compass (w/h & f/b)
- 5-station intercom (w/h, f/b, fore deck, aft deck, e/r)
- ITT searchlight with dual controls
- Hailer (w/h and f/b)
- Centralized telephone system with 8 units
- Connection and antenna for GSM cellular phone

Entertainment:

- Seatel TV satellite antenna with receiver
- 27" Sony Trinitron with DVD reader in salon
- TV with DVD in master and VIP
- B & O sound system in salon/dining with DVD/CD
- Car stereo with CD on f/b and all living areas

ELECTRICAL SYSTEM

- 220V/110V
- 60 Hz AC
- 24V/12V DC
- 21 Kw Kohler generators with sound shields (850 hrs) (2)
- Battery chargers (2)
- Inverter
- 50 Amp/220V shore connections with cords (2)
- Glendinning cable masters (2)
- 510 Amph-24V service battery bank
- 240 Amph-24V engine battery bank
- 12V batteries for generators (2)
- Main electric panel in the e/r
- Main electric switchboard and control panel in w/h
- Distribution panels throughout
- Circuits protection with breakers and fuses
- Anodic protection of metal parts with bonding and zincs on transom
- Halogen lights throughout

Earning your trust, one boat at a time

701 North Federal Highway Suite 301 • Stuart, Florida 34994

772.463.3131 • 772.463.3121

united@unitedyacht.com

PROPULSION AND MACHINERY SYSTEMS

- 2 X 1,370HP CAT 3412 TAC (2,300 rpm) with 900 hrs
- ZF BW195 V gear boxes (2.488:1)
- Stainless steel shafts
- Bronze struts
- 4-blade propellers (diameter 39.4")
- Stainless steel rudders with hydraulic steering system and emergency tiller
- GPM (Glendinning) throttle/gear controls
- Three helm stations (w/h, f/b, and aft deck)
- Bow thruster with triple controls
- Hydraulic trim tabs
- Naiad stabilizers
- Marine Air chilled water, reverse cycle air conditioning (108,000 BTU)
- Four bilge blowers (e/r)

Engine Room



Aft Deck – Port Steering Station



FUEL SYSTEM

Day tanks in the engine room (1,136 gal), and structural tank forward (529 gal). Fuel transfer pump with manual back-up pump. Refueling by gravity from a filler on either side of main deck. Dual SEPAR filters for main engines and single SEPAR filters for generators.

FRESH WATER SYSTEM

450 gallon aluminum tank under master's floor; the fresh water circuit is pressurized by two pumps (one is a back-up) through an air-cushioned reservoir tank. Two water heaters; dock connection with pressure regulator; water filters; 600 gal/day water maker; level gauge in galley.

GRAY WATER SYSTEM

Three aluminum sump tanks collect water from the lower sinks and showers and are emptied by three automatic pumps that discharge overboard.

BLACK WATER SYSTEM

The TECMA electric toilets pull fresh water from the water system through solenoid valves and discharge directly into an 82 gallon aluminum holding tank, which can be emptied overboard by a manually operated electric pump or by the dock facilities.

BILGE SYSTEMS

- A) Four automatic and submersible pumps, one for each water-proof compartment of the boat. Alarms and controls of these pumps are in the wheelhouse.
- B) A high-capacity bilge pump, manually controlled and located in the engine room, can pull water from each compartment or from a free hose through metal pipes and a manifold.

This main bilge pump is interchangeable with the fire pump in an emergency.

Earning your trust, one boat at a time

701 North Federal Highway Suite 301 • Stuart, Florida 34994

772.463.3131 • 772.463.3121

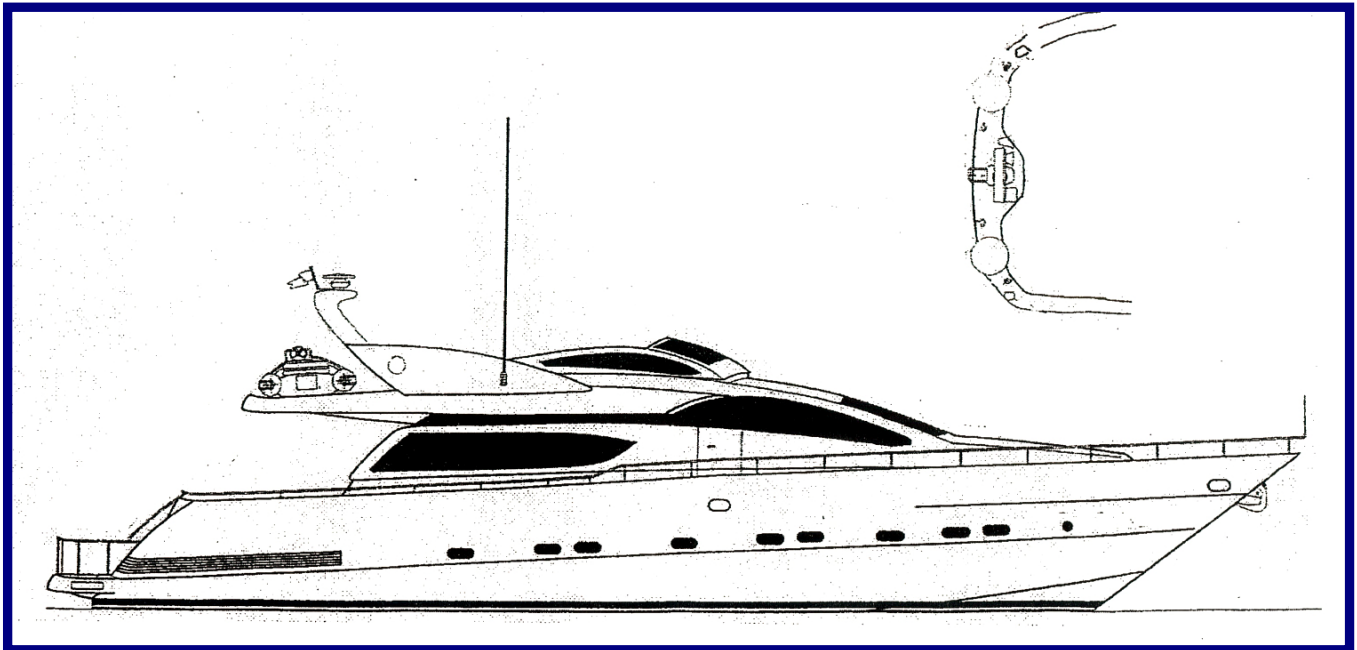
united@unitedyacht.com

FIRE SYSTEMS

- A) A fixed CO2 system in the engine room is manually operated through a lever from the aft deck. Pulling the lever a pre-programmed sequence of interventions starts and proceeds automatically: an acoustic alarm is activated, the fuel to engines and generators is shut off, the bilge blowers are stopped, the louvers of the air intakes of the engines are closed, and finally the nozzles of CO2 are opened.
- B) There is also a fixed salt water system with two outlets (bow and stern) and a pipe that is fed by the fire pump, when needed. The pump is interchangeable with the bilge pump in case one of the two is out of service. The fire system is used also to wash anchor and chain.
- C) An adequate number of portable extinguishers are stored in adequate places.

Smoke detectors are mounted in all living areas.

PROFILE



DECK FEATURES

- 176 lb anchor with 190' chain
- Maxwell windlass
- Stainless steel bow pulpit and handrail
- Teak decks (including fly bridge and platform)
- Varnished teak cup rail
- Windshield wipers and washers
- Windshield cover
- Sunbathing cushions forward and on f/b
- Two bulwark doors with Marquipt boarding stair
- Three airplane-type doors on deckhouse
- Tempered glass windows with polished stainless steel double frame (inside and outside)
- Curved sliding door to salon of tempered glass with stainless steel frame
- Molded stair to f/b with teak steps
- 3rd helm station on aft deck
- Two Maxwell mooring winches aft
- Lacquered wood table with 8 Rattan chairs aft
- Hydraulic passarelle on transom
- Swim platform with stainless steel rails
- Hydraulic swim ladder
- 12' Jet Nautica rib
- Opacmare davit
- 2 x 6 people life rafts
- Fenders and lines
- Coast Guard safety package

Earning your trust, one boat at a time

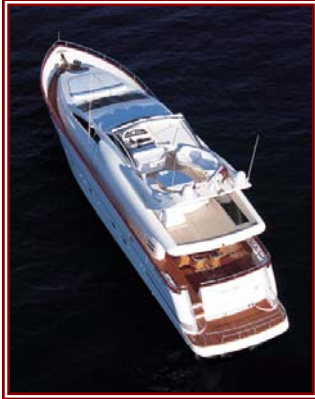
701 North Federal Highway Suite 301 • Stuart, Florida 34994

772.463.3131 • 772.463.3121

united@unitedyacht.com

ADDITIONAL PHOTOGRAPHS

Arial Stern Profile



Aft deck-Starboard Stairs to Flybridge



Running Bow Profile



BROKER'S REMARKS

Sleek profile by the Italian stylist Fulvio De Simone (the creator of Pershing and other prestigious models). Gorgeous and distinctive décor with gloss lacquered burl wood, onyx, Italian leather and ultra suede, wood motifs on the ceilings with recessed lights. The Viareggio standards have been integrated by the owner's tasteful choices during construction such as the elegant toilets, which are concealed in wood furniture with hinged covers. The excellent layout and the beam make this model much closer to an 80' than to a 70' and an example is the exceptional master stateroom with his and hers bathrooms and plenty of walking space, closets, and drawers. "**Classy Lady**" is in excellent condition with shiny exteriors, due to the recent Awlgrip paint, and impeccable interiors (because the yacht has been mainly used as a day boat).

The owner is motivated to sell and the asking price is already under market value.
The replacement cost would be today between 3.5M and 4M dollars.

DISCLAIMER

The listing broker and his company offer the details of this vessel in good faith but cannot guarantee or warrant the accuracy of the information nor warrant the condition of the yacht. A buyer should instruct his agents, or his surveyors, to investigate such details as the buyer desires validated. This vessel is offered subject to prior sale, price change, or withdrawal without notice.