

# UNITED YACHT SALES

## “Francine”



### 151' Benetti ~ 1989

Builder:	<b>Benetti</b>	Fuel Capacity:	<b>18,000 Gallons</b>
Model:	<b>Cockpit MY</b>	Water Capacity:	<b>4,000 Gallons</b>
Type:	<b>Motor Yacht/ Classic</b>	Hull Material:	<b>Steel</b>
LOA:	<b>151'</b>	Speed: Cruise:	<b>12 Knots</b>
Beam:	<b>26'</b>	Speed: Max:	<b>18 Knots</b>
Draft:	<b>6'6"</b>	Location:	<b>Ft. Lauderdale, FL</b>
Engines:	<b>2 x Caterpillar 3512B / 2008</b>		

**\$14,900,000**

**NOT FOR SALE TO US CITIZENS WHILE IN US WATERS**



*Earning your trust, one boat at a time*

701 North Federal Highway • Suite 301 • Stuart, Florida 34994

772.463.3131 • 772.463.3121

[united@unitedyacht.com](mailto:united@unitedyacht.com)

## SALON



The Salon is equipped with a head in starboard forward corner, with marble counters. Forward center salon is a built in glass faced cabinet. Starboard forward of the salon, there are steps leading down to the main deck. The salon is equipped with a long C-shaped couch to starboard, two coffee tables, and aft corner, there is a bar with small refrigerator, and there are double entrance doors that recess into pocket doors and sliding screens to cover them. Built in cabinetry housing glassware and china, TV behind doors, Sony stereo system, Digitrex DVD/CD/MP3 player, a Yamaha, model TX480L AM/FM stereo tuner model KX-W592 stereo, double cassette deck, and Yamaha model DSP-A592. Stereo has remote speakers throughout with built in cabinetry to house entertainment center.

The salon has wall to wall carpeting, all of the wood is naturally finished, drapery on windows.

## GALLEY



The Galley is equipped with pantry forward, has built in cabinetry. Following is spiral stairs leading up to the pilot house and to the right of that; there is a short passageway and steps leading down into the crew's galley and quarters. The main galley is equipped with stainless steel sink, hot and cold water, sink has disposal, there is a third sink equipped with a disposal, grill top. Forward the galley is a built in counter with stools, refrigerators and freezers, dumb waiter. All of the freezers are stainless steel. Lots of storage space, passageway leads aft to the master stateroom.

## MASTER STATEROOM



The Master is furnished with portside walk in closets, Sony flat screen television set, Sony six head Hi-Fi stereo, VCR and a Sony model STR-K760P Digital Audio Video control center. There is a walk in head, with a tub, two gold sinks with gold fixtures, enclosed shower stall, bidet and marble throughout. She has built in cabinetry, fixed windows, queen sized berth with built in end tables. The master has wall to wall carpeting throughout. There are recessed overhead lights and indirect lighting. The passageway leads back aft from the master stateroom to the study

*Earning your trust, one boat at a time*

701 North Federal Highway • Suite 301 • Stuart, Florida 34994

772.463.3131 • 772.463.3121

[united@unitedyacht.com](mailto:united@unitedyacht.com)

## **STUDY**

The study has a desk, couch, and built in glass faced book cases, closet and storage area. The passageway leads back aft to the salon area.

## **GUEST STATEROOM 1**

This Guest Stateroom is forward and to the port side, it is furnished with a queen size berth, with built in cabinetry and hanging lockers to either side. There is an enclosed head with toilet, bidet, convention head, and sink. There are opening ports in both the head and the stateroom. The passageway leads back out into the foyer. This Stateroom is also used as the Captain's Quarters

## **GUEST STATEROOM 2 AND 3**



Guest Stateroom 2 is aft of other stateroom with two single berths, couch, TV, and hanging lockers. All staterooms down below are wall to wall carpeting. Head is aft.

## **GUEST STATEROOM 4**

Guest Stateroom 3 is starboard part of the foyer, queen size berth, TV, hanging locker, cabinetry, and couch. Head forward.

## **MAIN DECK**

The Main Deck has steps on starboard side of the flybridge leading down to the main deck. The starboard passageway on the main deck is equipped with boarding gates, and passerelle. The passageway leads down the starboard side back to the aft deck. The aft deck is equipped with a transom boarding gate with open aft cockpit. There is access to the lazarette from the cockpit. Steps leading up from cockpit to the aft deck rise up and allow access to the engine room. There are courtesy lights, hand rails, ladder to either side of the deck, boarding gates to starboard and port. There is an entrance door from the port side passageway that leads into the main entrance into main salon starboard side aft.

*Earning your trust, one boat at a time*

701 North Federal Highway, Suite 301 • Stuart, Florida 34994

772.463.3131 • 772.463.3121

[united@unitedyacht.com](mailto:united@unitedyacht.com)

## UPPER DECK

The upper deck is equipped with raised bulwark all around with polished stainless handrails back aft. There are storage lockers built into the combing bulwarks. The exterior deck is teak throughout. She has starboard and port wing stations. There are passageways leading back aft down either side of main deckhouse, doors separating the aft deck from the side passageways. The aft upper deck is equipped with table, built in bench style seats all around the aft deck with storage below. Also has steps leading from the aft deck up to the flybridge, with two sliding doors to the entrance of the salon.

## ELECTRONICS AND NAVIGATION

- VHF ICOM-M402S, 1-25W F3E
- (6) VHF portables ICOM M32
- Furuno Radar FR2125
- F77 SAT COM
- GPS NT200 Trimble Navigation
- AIS Furuno FA-1502
- Furuno GPS GP-31
- C-Plath Navipilot V autopilot 4685
- Seatel Rac-73113
- Water Temp B&G Hydra 2000
- Stabilizers Koop Nautic Sea Rocq
- Barometer 5" Schatz chrome
- Chart plotter CMap Maxsea
- Depth Sounder B&G Hydra 2000
- Wind indicator Robertson IS-11 Multi
- Adequate lights and signals
- VHF/DSC SEA 7157 1-25W 160G3E/13K5G2B
- HF SSB Skanti TRP 8750
- Starboard X-Band radar Furuno 1932 MK2
- Mini M Nera
- AIS Furuno Transponder FA-1501
- Northstar GPS 952x
- C-Plath Gyrom repeater 4881
- B&G Hydra 2000 Distance log
- Rudder angle indicator Sein Analog
- Spotlight Carlisle-Finch with toggle control
- Ship's clock 5" Schatz chrome
- Compass C-Plath gimbale
- Intercom BAP Phone 19 station
- CCTV 10" monitor with Pan/tilt control and zoom lens control
- Cellular phone Erickson GSM

## PILOTHOUSE



The Pilothouse has entrance doors starboard and port. There are helm and mate seats on adjustable pedestals. Immediately aft of the pilothouse is the sea office, table. The electronics array from the pilot house console and back around the navigation station. There is a raised table with C-shaped seating, carpet runners throughout the area; all the wood is naturally finished. The passageway leads back down the port side from the pilothouse aft, wet bar at the end of the passageway, prior to entering the sky lounge. The passageway is separated from the salon by a pocket door.

*Earning your trust, one boat at a time*

701 North Federal Highway, Suite 301 • Stuart, Florida 34994

772.463.3131 • 772.463.3121

[united@unitedyacht.com](mailto:united@unitedyacht.com)

## **FLY BRIDGE LOOKING AFT**



Her Flybridge has raised bulwarks all around with storage in the combing. There are courtesy lights all around and two flood lights. For comfort there are (4) cushioned seats and four (4) coffee tables amidships on the flybridge. Aft of that is the main mast, the main mast is housing for radar antennas and antennas for other functions. There is a chest type freezer on the port side. Aft of that is a Jacuzzi, the flybridge is decked with teak floors throughout. The bolsters have varnished teak cap rails and polished stainless steel handrails around. The life rafts deploy from the flybridge, two to starboard and two to port. The life rafts are equipped with hydrostatic release.

## **CAPTAIN'S CABIN**

The Captain's cabin is Port fwd, aft of the foyer. The cabin is set up with a Queen size berth and head. There are carpet runners throughout the foyer.

## **CREW GALLEY**

The Crew's Galley is located on the lower deck, has an L-shaped dinette table with seating. Stacked washer/dryer, Speed Queen located on starboard side, Sony flat screen TV and computer. There is a bar separating the dinette from the proper. The galley is equipped with upright refrigerator/freezers. There are two galley counters, an ice maker, a GE Microwave oven and storage lockers. At the aft end of the crew's galley, there are steps leading up to the main deck and the main galley. From the main deck, there is a passageway off of the galley that leads down into the guest quarters and captains state room.

## **CREW QUARTERS**

The Crew's Quarters are down below on the lower deck, forward the crew galley. There is a forward, portside crew stateroom with two (2) double decker bunks, a step passageway down to main bunk. Bunks have built in storage below, hanging lockers. Aft of that is the crew head, electric flush, shower stall. On the starboard side of the passageway is another crew stateroom set up same way. They have overhead escape hatches; the third crew stateroom has double bunk, head same as others.

*Earning your trust, one boat at a time*

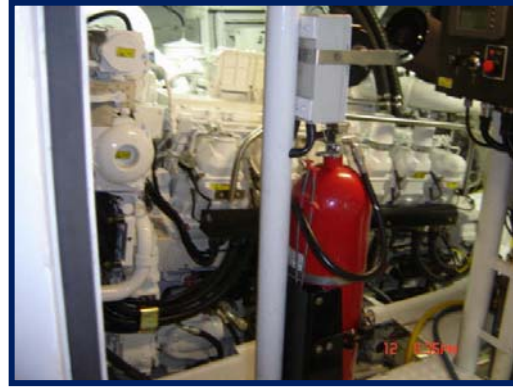
701 North Federal Highway, Suite 301 • Stuart, Florida 34994

772.463.3131 • 772.463.3121

[united@unitedyacht.com](mailto:united@unitedyacht.com)

## ENGINE/ MECHANICAL EQUIPMENT

- Northern Lights Gens (2) M1064A.51
- Water heater 300 liter
- Bilge pumps 380V with fire pump
- (2) NEW Caterpillar 3512B Series
- A/C System (4) Marine air system 360,000 BTU , reverse cycle
- Agua Whisper Water Maker/Sea Recovery



## ENGINE ROOM

Engines were early 2008 - (2) New Caterpillar 3512B series

Gensets were installed in 2007 @ Performance Power Systems, GA

Bow thrusters upgraded during 2006 refit

Watermaker 4/2006 the original was replaced with (2) smaller water makers - 1,800 gallons per day Sea Recovery Aqua Whisper compact water makers.

Oily water separator NEW

Fuel cooling pumps

A/C Chiller system Upgraded in 5/08 (4) new 7.5ton, 380V 50cycle chillers

**Hull and Tank** ultra sounded 12/08 (good)

Starboard fresh water tank had small crack in top and was patched –both tanks recoated

## TENDERS

2005 18' Nautica (2) Yamaha motors 60HP

2001 19.7' Cruise Craft-single 200 HP Yamaha Motor

*Earning your trust, one boat at a time*

701 North Federal Highway, Suite 301 • Stuart, Florida 34994

772.463.3131 • 772.463.3121

united@unitedyacht.com

## **BROKER'S REMARKS**

### **ADDITIONS TO FRANCINE:**

Partial Paint job was completed 12/08

Extension added 1996 by Palmer Johnson Yard in Savannah, GA

Windlass rebuilt in San Diego – 12/08 the main gears of both port and starboard windlasses -- internal gearings replaced.

Anchor lockers sand blasted and painted Stbd anchor replaced 9/08

(2) Galvanized --anchors each has 500' of chain

Bow teak is new

Foredeck painted in San Diego 12/08

Crew mess redone 12/08

Flybridge helm new Engle controls installed

Forward fuel tank in bow has 3,500 to 3,800 usable fuel (80%) –only tank gauge in engine room

Props done 12/08

## **DISCLAIMER**

The Company offers the details of this vessel in good faith but cannot guarantee or warrant the accuracy of this information nor warrant the condition of the vessel. A buyer should instruct his agents, or his surveyors, to investigate such details as the buyer desires validated. This vessel is offered subject to prior sale, price change, or withdrawal without notice.

*Earning your trust, one boat at a time*

701 North Federal Highway, Suite 301 • Stuart, Florida 34994

772.463.3131 • 772.463.3121

[united@unitedyacht.com](mailto:united@unitedyacht.com)